

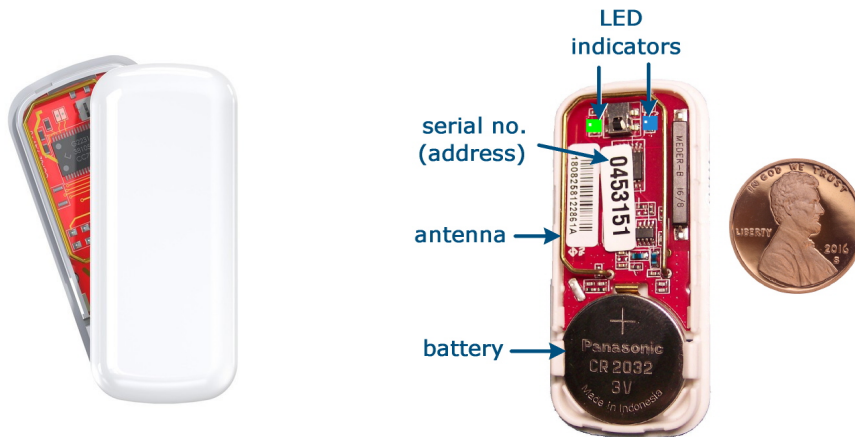
#KD-DS-5800-MINI Wireless Mini Door Sensor for Kadtronix HSRS & GPRS systems

Compact and inconspicuous, the KD-DS-5800-MINI wireless door/window sensor is simple to install and easily blends with most decors. The device is compatible for use with the following Kadtronix systems (3rd generation):

- HVAC Smart Relay Switch (HSRS)
- General Purpose Relay Switch (GPRS)

Note: Also compatible with some Honeywell wireless security systems featuring 345MHz alarm panels.

The KD-DS-5800-MINI is suitable for use with a variety of door and window types. Powered by a single CR2032 battery (included), the device provides consistent and reliable sensing with wireless RF signaling. It is a two-part design solution that consists of electronic sensor/transmitter unit and magnet. The device emits RF message signals when the corresponding door or window is opened or closed. (It also sends periodic status updates every 70 to 90 minutes.)



Notes:

- Uses a single CR2032 battery (included).
- The device is easily registered (enrolled) at a Kadtronix GPRS or HSRS controller (3rd generation).
- Unique, factory-assigned address (serial number) - requires no initialization sequence. (Over 16 million possible addresses.)

Features:

- Compact & unobtrusive, blends easily with most decors
- Easy-open case – requires no tools
- RF range: 200 ft. (open air) / 50 ft. typical
- Dual LED indicators
- Requires no initialization sequence
- Unique, factory-assigned address (serial no.)
- Long-life battery (CR2032, included)
- Miniature size (see specifications)
- Includes double-sided foam mounting tape

LED Indicators:

The sensor contains two (2) multi-color LED indicators. Colors are defined below:

- Blue – illuminates when the magnet is in proximity; aids installation for optimal placement
- Green – indicates sensor is transmitting
- Red – low battery

Color	Meaning
Blue	Active when the magnet is within proper range of the sensor unit (1 inch max). LED remains active for 15 minutes after battery is inserted / replaced, or when the cover is removed.
Green	Flashes when the sensor unit transmits a RF message. LED is active for 15 minutes after battery is inserted / replaced, or when the cover is removed.
Red	Upon low battery condition, the indicator flashes once every five seconds, for two minutes after a RF message transmission.

Mounting:

- Using double-sided foam tape (included), attach sensor unit to the stationary part of the desired opening (typically the door-frame or window-frame).
- Mount the magnet to the moving part (i.e., the door or window itself).
- Avoid exposure to moisture, hazards, or extreme temperatures.
- Avoid mounting near large metal structures, electrical wiring, or wi-fi equipment, as these may impede RF signal transmissions.
- Detach front cover from the sensor
- Insert battery (CR2032, included).
- Replace the cover.
- Check that blue LED illuminates when the door or window is closed (i.e., magnet is near)

Note: LEDs remain enabled indefinitely while the cover is detached, but stays enabled for only 15 minutes after applying the cover. If additional time is needed after the 15 minute elapse, simply remove the cover, and then re-attach.

Battery replacement:

- Open the cover, and remove the old cell
- Install a fresh battery (CR2032), "+" side up
- Replace the cover.

Specifications:

- Part no. KD-DS-5800-MINI
- Sensor dimensions: 2.2"L x 1"W x 0.25"D
- Magnet dimensions: 1.5"L x 0.25"W x 0.25"D, gap distance: 1"
- Magnet gap distance: 1" (max)
- Battery: 3V lithium (CR2032), 3 to 5 year life expectancy
- Operating temperature: 32°F (0°C) to 122°F (50°C)
- Transmitting frequency: 345 MHz
- Agency Listings: FCC,IC

High performance mini-sensor!

mini-sensor



- Measures 2.2" x 1.0" x 0.3"
- Inconspicuous appearance
- Requires no initialization
- 1-inch magnetic gap distance
- Includes battery (CR2032)

* Requires HSRS 3rd generation controller

traditional models



Style	Part No.	Application(s)	Description
-	#KD-DS-5800-MINI	Doors, windows	Compact size, coin-cell battery (CR2032) measures: 2.2" h x 1" w x 0.3" d
A	#KD-DS-5816	Doors, windows	Full size, dual-zones (wired + wireless) measures: 3-1/16" h x 1-9/16" w x 1-3/16" d
B	#KD-DS-5800-MICRA	Windows	Recessed, installs in window frame measures: 0.75" dia.
C	#KD-DS-5800-RPS	Doors	Recessed, built-in plunger switch measures: 0.75" dia.
D	#KD-DS-5818-MNL	Doors, windows	Recessed, installs in door frame measures: 0.75" dia. X 3.0" long

Notes:

- Batteries included with all styles.
- Sensors may also be compatible for use with Honeywell wireless alarm systems.

Contact Information

Delahoussaye Consulting

3682 N. Wickham Rd.

Suite B1-224

Melbourne, FL 32935

info@kadtronix.com

www.kadtronix.com

321-757-9280