

Wi-Fi Card Data Logger (WCDL)

The Wi-Fi Card Data Logger (**WCDL**) provides realtime logging of RFID proximity card scans. It is a plug-and-play solution that consists of reader/controller unit (shown right) and companion Windows software ([WCDL Client](#)). The hardware combines RFID (proximity) reader and non-volatile storage for up to 4000+ card transactions. (Capacity is doubled with optional memory expansion.).

Measuring 8" x 4.75" x 1.25" (excluding antenna), the **WCDL** unit is simple to install and requires no communications wiring. Accepting cards, fobs, or other format-compatible media, it is ideal for use in applications requiring offline or online capture of user transactions:

- Public/private transit
- Equipment usage
- Inventory tracking
- Student identification
- Employee attendance
- Trade shows & conventions

When a user card scan occurs at a remote **WCDL** unit, its internal [WC-6150 controller](#) captures and stores the data record to non-volatile serial EEPROM memory for eventual upload. Each transaction record consists of three fields:

- Date (yymmdd)
- Time (hhmmss)
- Card ID

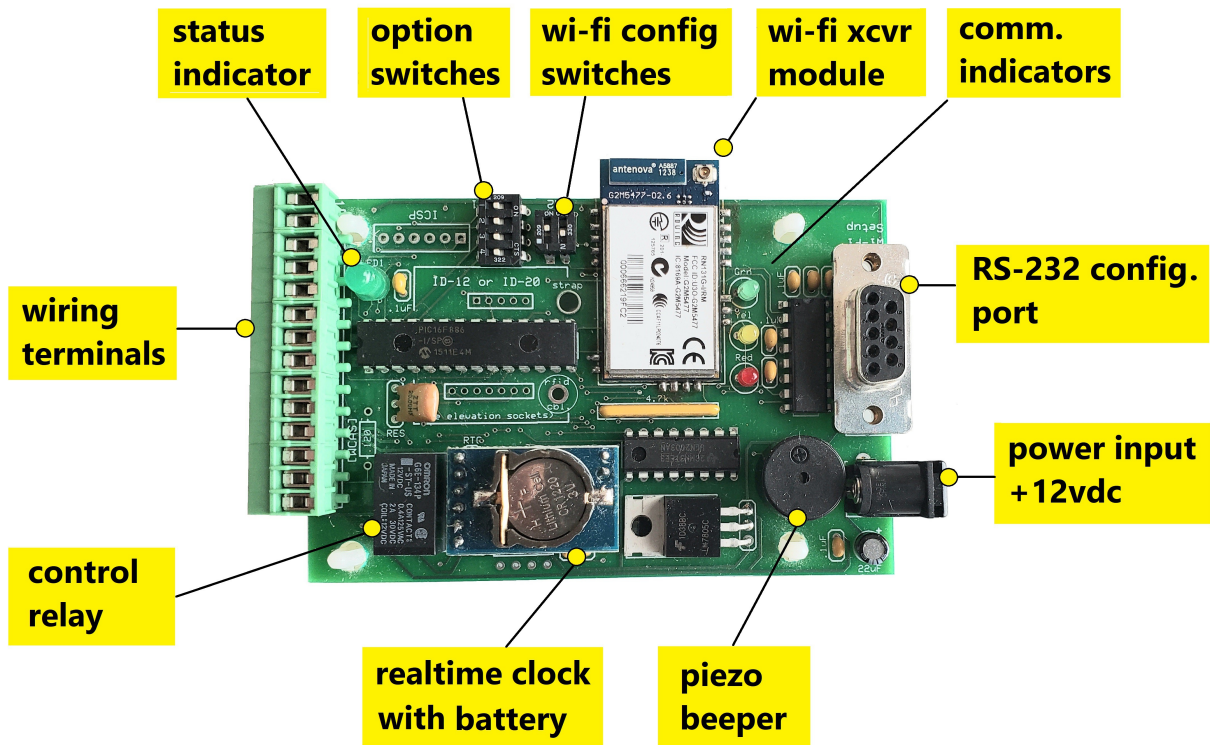
The **WCDL** unit automatically uploads stored record(s) when a Wi-Fi connection is established to a host computer that is running [WCDL Client software](#). The software uses a proprietary polling algorithm to retrieve card data records.



WC-6150 Controller

The **WC DL** unit consists of internal WC-6150 controller, integrated Wi-Fi transceiver, and proximity card reader. The device accepts standard 26-bit Wiegand format and can also be customized for use with other card media formats per customer requirements. The WC-6150 controller has these features:

- Digital microcontroller
- Integrated Wi-Fi data transceiver
- Non-volatile storage for 4,000+ data records (8,000+ records ext. memory option)
- Realtime clock (RTC) w/battery
- RS-232 host config. interface (for Wi-Fi setup)
- Onboard configuration DIP switches
- Optional relay for external equipment control



Compatible RFID Media

The **WCDL** unit provides an onboard RFID prox card reader and is compatible for use with standard 125 kHz media including cards, fobs, etc.



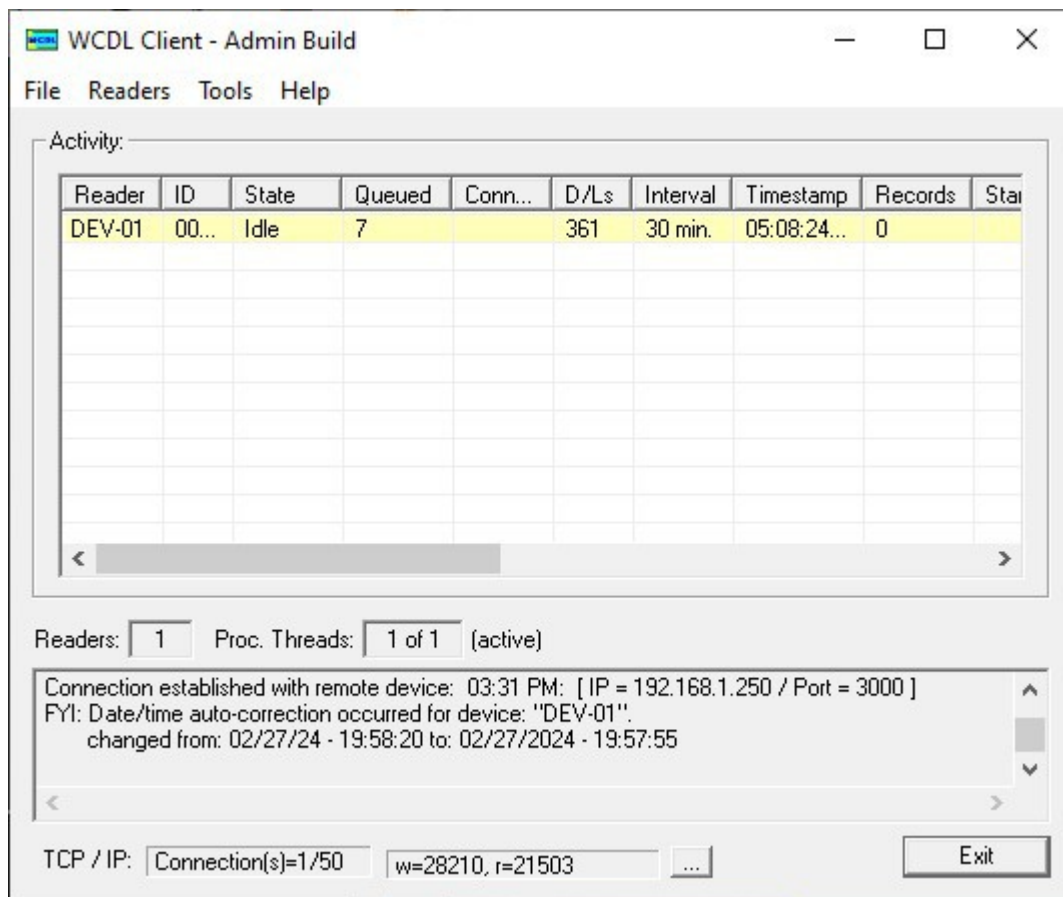
Note:

The WCDL can be customized for various RFID card types and formats upon request.

WCDL Client Software

The **WCDL** system incorporates a Windows-based client application which provides necessary features, operations, and utilities for setup and capture of stored card records by one or more Wi-Fi enabled WC-6150 remote units.

Kadtronix WCDL Client for Windows



This application software is available for download at the Kadtronix website and includes a "Lite" edition that is free to use for evaluation purposes. (Compatible operating system versions include Windows 95, Vista, 7, 10, and above.) Use the secure link below to download and install the WCDL Client application to your PC or laptop:

https://www.kadtronix.com/downloads/wcdl_setup.zip

Hardware Installation

Installation is straightforward, requiring minimal setup and configuration. The unit may be applied to any suitable mounting location, including a wall or pedestal. Consult the user manual for detailed instruction:

https://www.kadtronix.com/downloads/wcdl_quick_ref.pdf

The system includes items shown below including WCDL unit, whip antenna, USB communications cable (for Wi-Fi network configuration setup), and AC power adapter.



Specifications

Specifications:

- Measurements: 8" x 4.75" x 1.25" (excluding antenna)
- Operational voltage: 12vdc
- Compatible RFID media: 125 kHz prox cards (see note)
- Transaction capacity: 4,000+ records / 8,000+ records with extended memory
- Communications method: Wi-Fi (TCP/IP)
- RF frequency: 2.4 GHz
- Date/time handling: onboard realtime clock (RTC) w/ lithium battery
- Supervisory monitoring & control: [WCDL Client software](#)

Note:

- The **WCDL** can be customized for various RFID card types and formats upon request.

Part Numbers

Part no.	Description
KD-WCDL	Basic card data logging system including reader unit, whip antenna, USB config cable, AC adapter, and companion Windows software (download).
KD-WCDL-EXT	Extended memory option featuring increased storage capacity (see note).

Note:

- *Extended memory option provides increased non-volatile storage capacity for 8,000+ data records.*

Contact Information

Delahoussaye Consulting

3682 N. Wickham Rd.
Suite B1-224
Melbourne, FL 32935

info@kadtronix.com
www.kadtronix.com

321-757-9280